

THE CALDWELL HOME

101 EMBER LANE
WESTVIEW, NJ



LEMLEY HOME

interiors

PROJECT: #1

PHASE 5: COVER SHEET

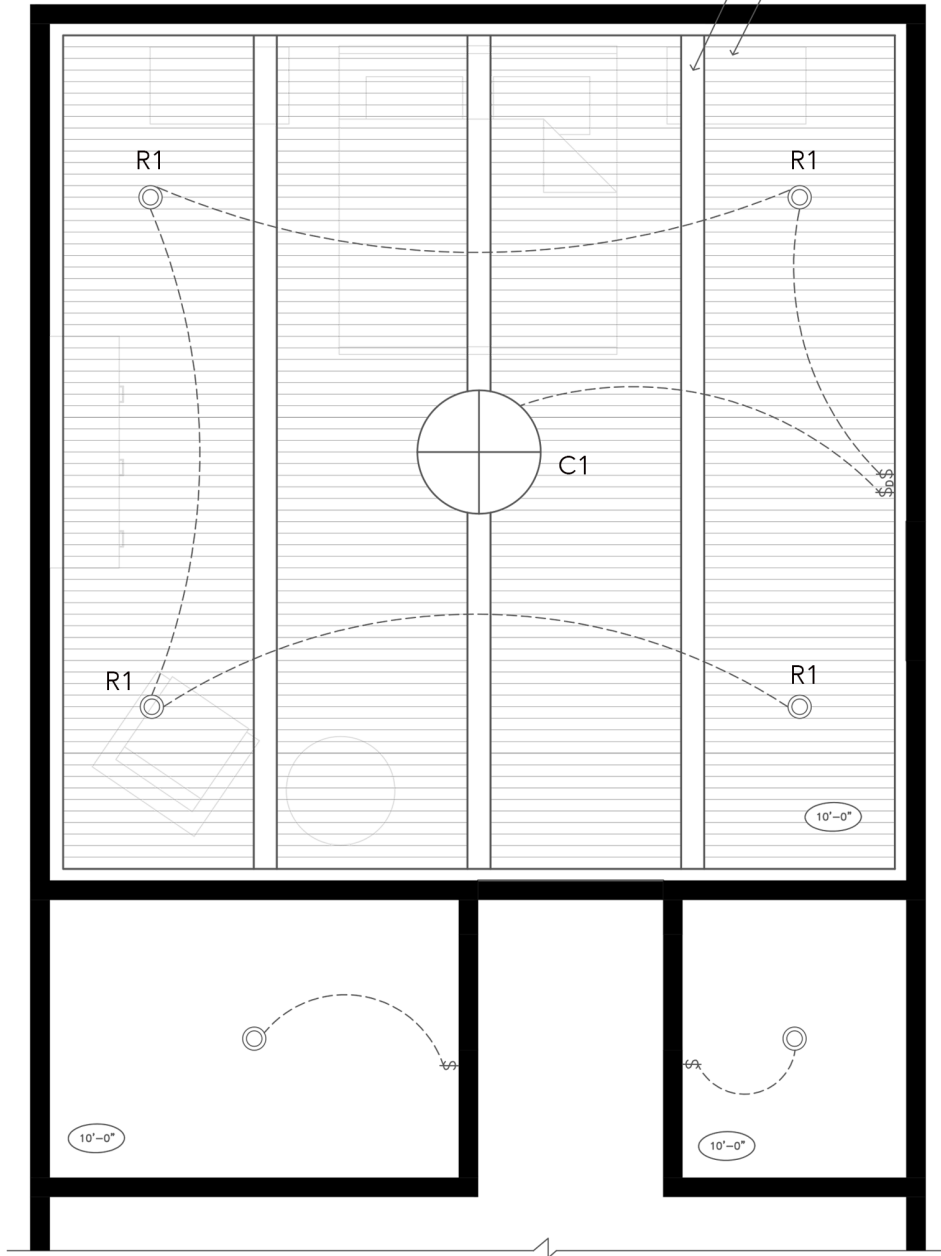
NAME:
SARAH LEMLEY

DATE:
03/18/2021

CLASS:
FACS 442- LIGHTING

6" DEEP FAUX RECLAIMED WOOD BEAMS TYP

PAINTED BEADBOARD



BEDROOM REFLECTED CEILING PLAN

SCALE 1/4" = 1'-0"



LEMLEY HOME
interiors

PROJECT: #1

PHASE 1: BEDROOM

RCP & SPECIFICATIONS

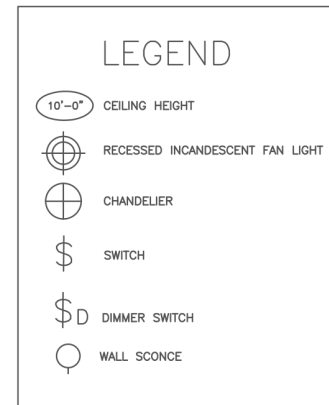
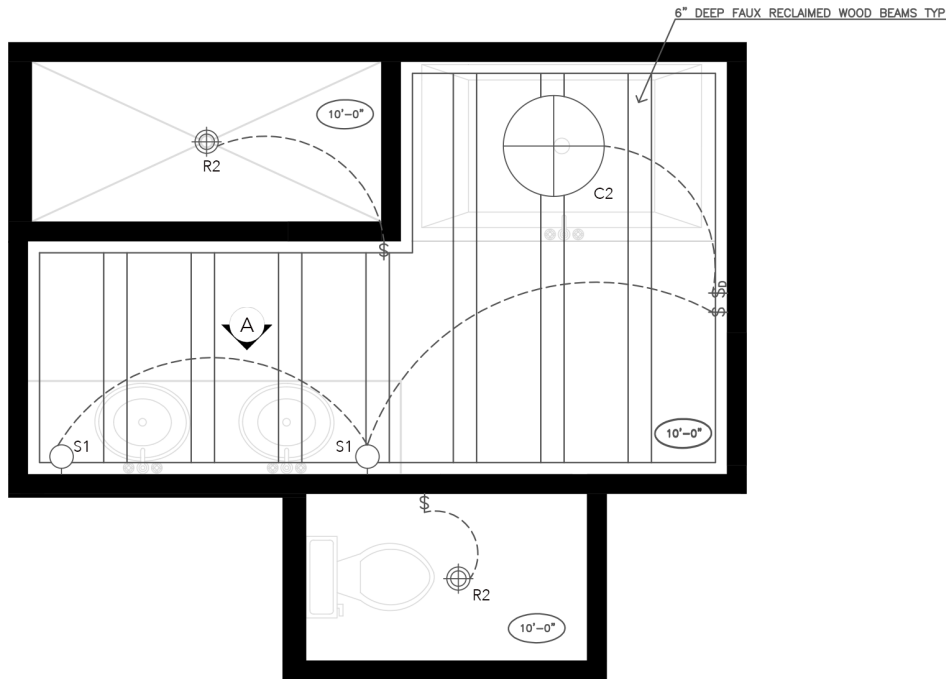
NAME:
SARAH LEMLEY

DATE:
02/18/2021

CLASS:
FACS 442- LIGHTING

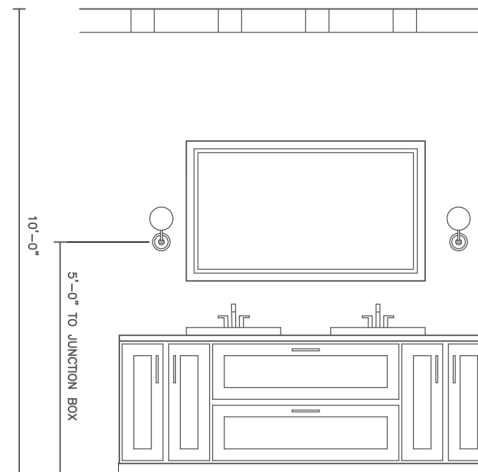
LEGEND

- 10'-0" CEILING HEIGHT
- RECESSED INCANDESCENT LIGHT
- ⊕ CHANDELIER
- \$ SWITCH
- \$D DIMMER SWITCH



BATHROOM REFLECTED CEILING PLAN

SCALE $\frac{1}{4}" = 1' - 0"$



A BATHROOM ELEVATION
SCALE $\frac{1}{4}" = 1' - 0"$



LEMLEY HOME
interiors

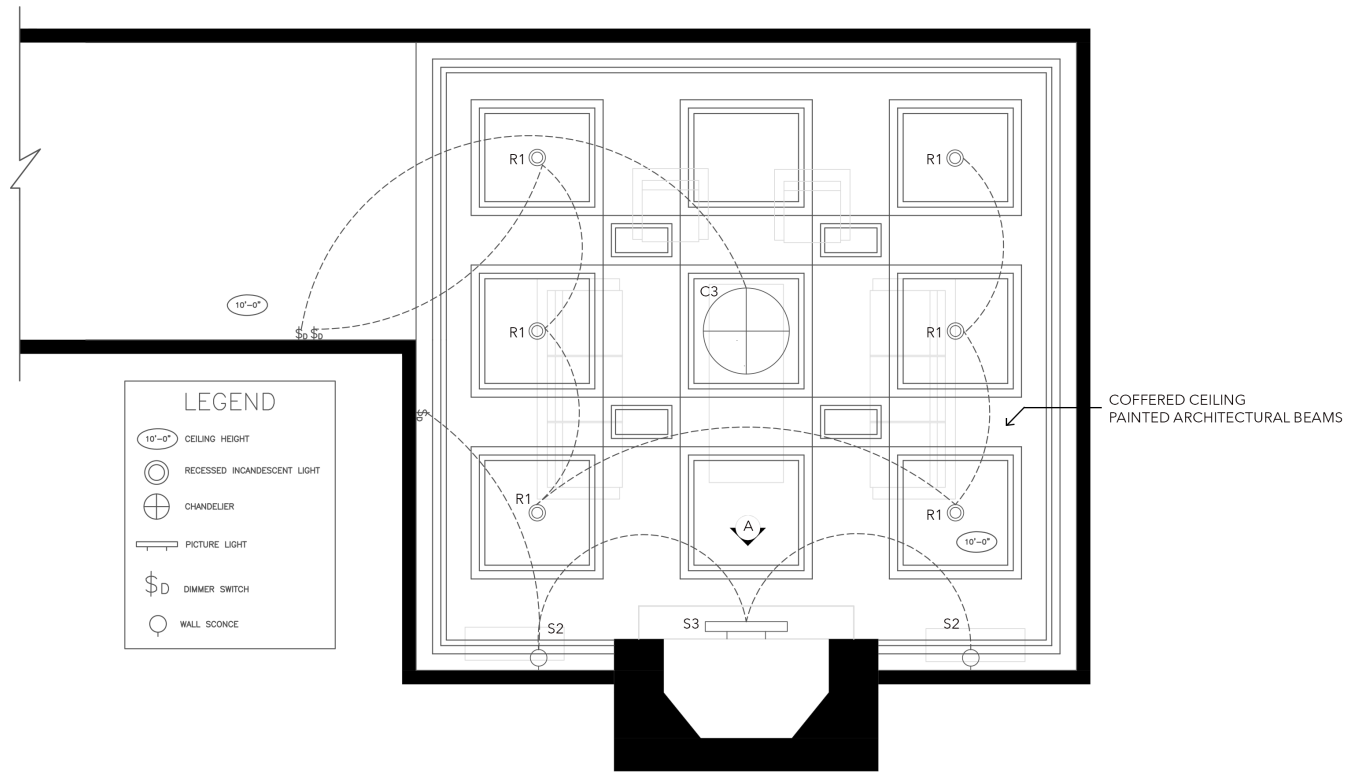
PROJECT: #1

PHASE 2:
BATHROOM RCP &
SPECIFICATIONS

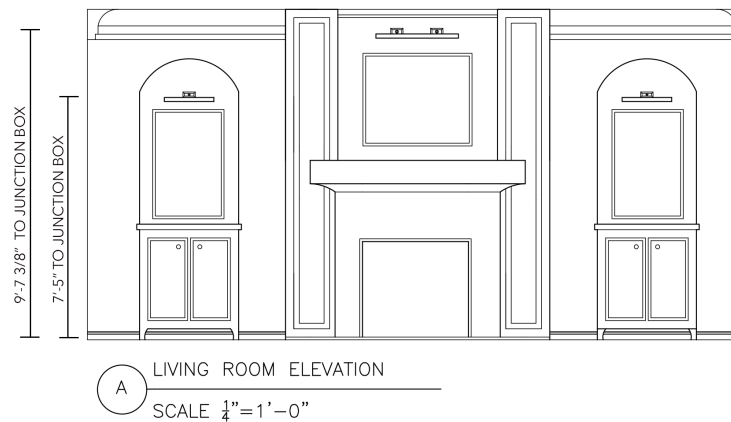
NAME:
SARAH LEMLEY

DATE:
03/02/2021

CLASS:
FACS 442- LIGHTING



LIVING ROOM REFLECTED CEILING PLAN
SCALE $\frac{1}{4}"=1'-0"$



LEMLEY HOME
interiors

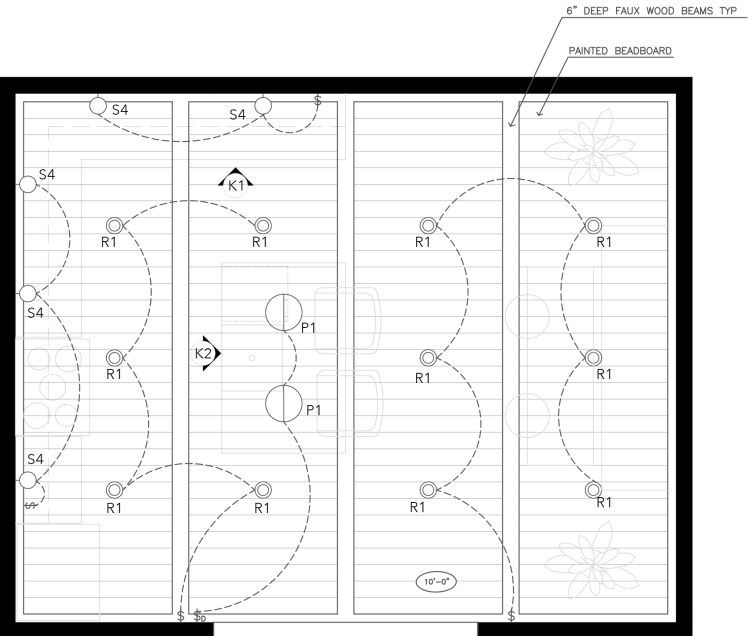
PROJECT: #1

PHASE 3:
LIVING ROOM RCP &
ELEVATION

NAME:
SARAH LEMLEY

DATE:
03/04/2021

CLASS:
FACS 442- LIGHTING



KITCHEN REFLECTED CEILING PLAN
 SCALE $\frac{1}{4}" = 1'-0"$

LEGEND

10'-0"

CEILING HEIGHT

RECESSED INCANDESCENT LIGHT

PENDANT

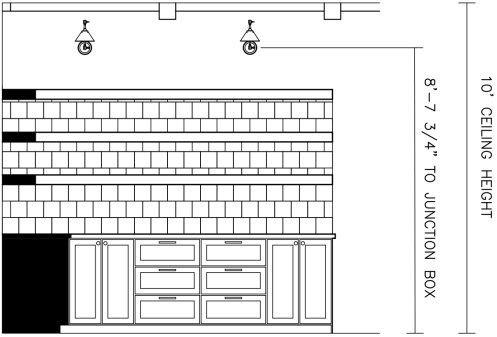
WALL SCONCE

\$D

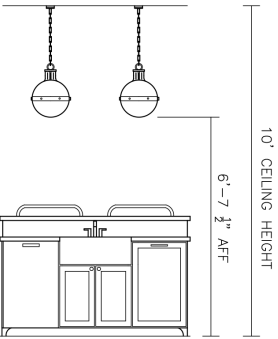
DIMMER SWITCH

\$

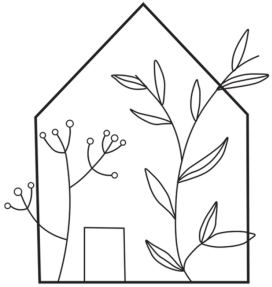
SWITCH



KITCHEN ELEVATION: SIDE
 K1
 SCALE $\frac{1}{4}" = 1'-0"$



KITCHEN ELEVATION: ISLAND
 K2
 SCALE $\frac{1}{4}" = 1'-0"$



LEMLEY HOME
interiors

PROJECT: #1

PHASE 4:
 KITCHEN RCP &
 ELEVATION

NAME:
 SARAH LEMLEY

DATE:
 03/12/2021

CLASS:
 FACS 442- LIGHTING

Bistro Medium Round Chandelier

Item # S 5271HAB/BLK-WG

Designer: Ian K. Fowler

O/A Height: 59.5"

Fixture Height: 32"

Min. Custom Height: 44"

Width: 32"

Canopy: 4.5" Round

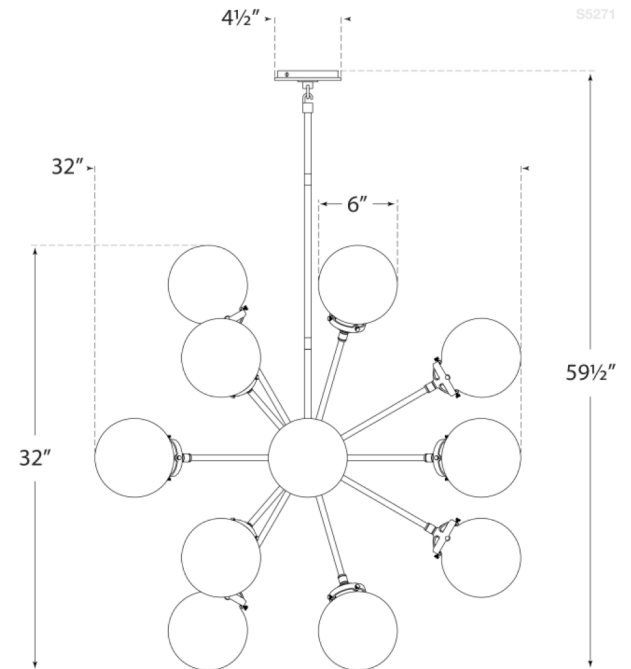
Finishes: HAB, PN

Glass Options: CG, WG

Socket: 18 - E12 Candelabra

Wattage: 18 - 40 G

Note: Custom Height Available



PD-30826-AB Cinema 8-Light LED Chandelier



Share This Product

We are Open and Shipping! | FREE Shipping* | Hassle-Free Returns | Lowest Price Guarantee

Total Watts, Aged Brass

SKU: PD-30826-AB

Our Price: **\$2,499.00**

List: ~~\$3,123.75~~

Lighting Dimensions

Height	6"
Length	26"
Maximum Height	564"
Minimum Height	204"
Width	26"

Mounting Details

Canopy	Includes Canopy
Canopy Dimensions	12"w x 12"l x 2.5"d
Mounting System	Ceiling Junction Box Required

Light Type

Beam Type	Flood
Bulb Base Type	Integrated LED
Bulb Type	Integrated LED
CRI	90
Bulb1 Included	Yes
Kelvin	3500
Lumens	3488
Bulb Technology	LED
Bulb Quantity	8
Bulb Watts	56
Bulb 2 Included	No
Total Watts	448
Voltage	120-240-277

Shipping Dimensions

Carton Weight	58.53
Carton Height	12.99
Carton Length	29.53
Carton Width	29.53
Package Quantity	1

Material and Finish

Finish	Aged Brass
Material	Glass
Shade	V-Cut K5 Clear Seeded Crystal Glass

Certifications

Certification	ETL Approved for Damp Locations in US and Canada
---------------	--

C2

Item # KW 5021G-CG

Designer: Kelly Wearstler

Fixture Height: 36"

Width: 31.25"

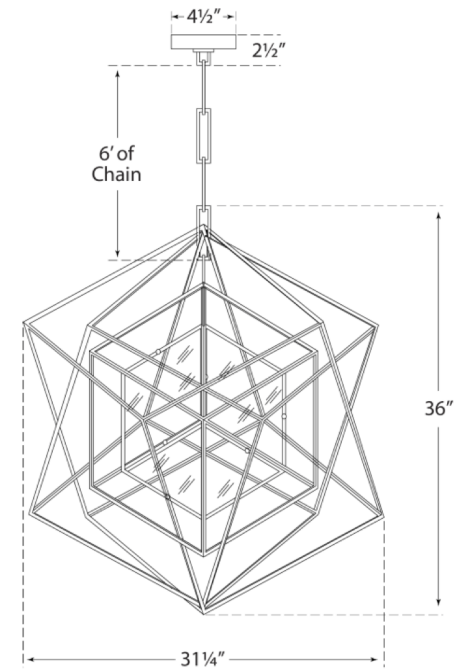
Canopy: 4.5" Square

Finishes: Al, G

Glass Options: CG

Socket: 4 - E12 Candelabra

Wattage: 4 - 60 B



Hicks Large Pendant

P1

Item # TOB 5063BZ/HAB-WG

Designer: Thomas O'Brien

Height: 18"

Width: 13.25"

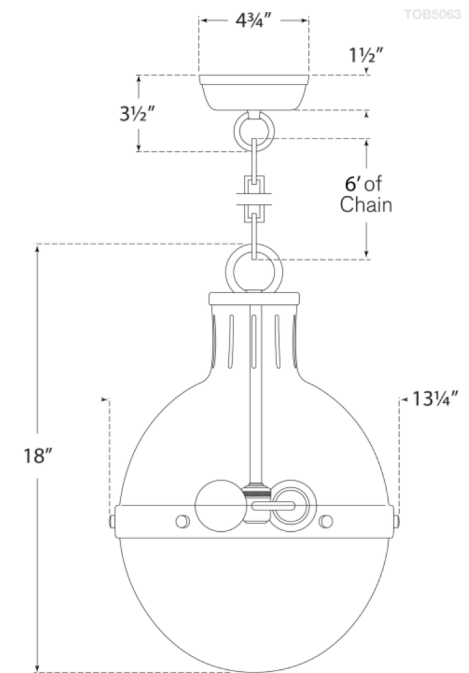
Canopy: 4.75" Round

Finishes: AN, BZ/HAB, HAB, PN

Glass Options: WG

Socket: 2 - E26 Keyless

Wattage: 2 - 75 A



E26 6" Trim Series

DESCRIPTION

Straight metal baffle trim with self-flange in the 6" trim family for use in recessed downlighting. Compatible for use in Halo and other housings.

Catalog #	Type
Project	
Comments	Date
Prepared by	

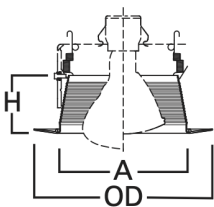
SPECIFICATION FEATURES

- Straight sides of metal baffle for large diameter lamps
- Two plastic removable trim rings included narrow 7.25"OD and wide 8.00"OD
- Coil spring retention

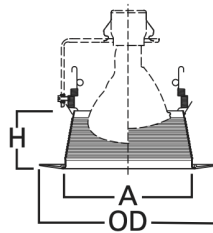
Housings	Max Lamp Compatibility
H7ICT H7RICT	50W PAR30S, 75W PAR30L, 45W PAR38, 65W BR30, 65W BR40
H7ICAT H7RICAT	
E7ICAT E7RICAT	
H7UICAT	75W PAR30S, 75W PAR30L, 90W PAR38, 65W BR30, 90W BR40
H27ICAT E27ICAT	50W PAR30S, 75W PAR30L, 60W BR30
H27RICAT E27RICAT	
H7T E7TAT	75W PAR30S, 75W PAR30L, 150W PAR38, 65W BR30, 120W BR40,
H7RT	
H7TCP E7RTAT	75W PAR30S, 75W PAR30L, 120W PAR38, 65W BR30, 120W BR40
H27T E27TAT	75W PAR30S, 75W PAR30L, 65W BR30
H27RT E27RTAT	

Compatible with Halogen, Incandescent, LED* or CFL* lamps.

IC



Non-IC



Dimensions

A: 5-5/8" [144mm]
H: 2-5/8" [67mm]
OD: 7-1/4" [184mm] Narrow
OD: 8" [203mm] Wide

ORDERING INFORMATION

SAMPLE NUMBER: 6101WB

Trim	Finish
6101= 6" Straight Metal Baffle with (2) Trim Rings	WB=White baffle, narrow & wide white trims (included) BB=Black baffle, narrow & wide white trims (included)

HOUSING COMPATIBILITY

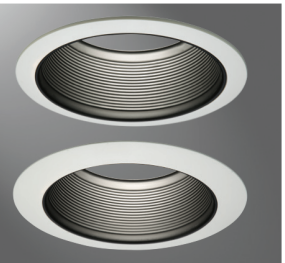
Trim #	Style	H7ICT	H7ICAT	H7RICT	H7RICAT	E7ICAT	E7RICAT	H7UICAT	H7ICTNB
6101	Baffle	•	•	•	•	•	•	•	—
		H7ICATNB	E7ICATNB	H27ICAT	H27RICAT	E27ICAT	E27RICAT		
		—	—	•	•	•	•		
		H7T	H7TCP	H7RT	E7TAT	E7RTAT	H7TNB	E7TATNB	H27T
		•	•	•	•	•	—	—	•
		H27RT	E27TAT	E27RTAT					
		•	•	•					

For use in select other's housings, refer to U.L. classification list at www.eaton.com/lighting/legal.

*UL1993 listed LED & CFL equivalent lamps permitted. Consult lamp manufacturer for conditions of use. Eaton does not warranty the lamp.



6101WB
White Baffle, Narrow & Wide
White Trims (Included)



6101BB
Black Baffle, Narrow & Wide
White Trims (Included)

6101

6-Inch Straight Metal Baffles



For use in Halo listed housings.



Select trims are classified for use in other housings. See www.eaton.com/lighting/legal.



Specifications

AP 80H-RVL

Recessed Bathroom Fan with Light and Humidity Sensor

Description: Low RPM, low noise, ceiling mount bathroom fan with recessed light and integrated Humidity Sensor • Suitable for new construction or remodeling • HVI certified • ETL listed for use in insulated ceilings (Type I.C.).

Motor/Blower: Permanently lubricated enclosed motor engineered for continuous energy efficient operation; power rating 120v/60Hz; motor equipped with thermal shut off.

Housing: Rugged 26 GA galvanized steel; expandable 4" to 5" duct connector with built-in back draft dampener; 2 anti-vibration hangar bar brackets adjustable to 24" span included.

Trim Ring: Low maintenance, wipe clean UV inhibiting polymeric resin. Mounts flush to ceiling. Accepts any of the following bulbs: 75W, PAR30, PAR30L, 14W (max) LED.

Light: Bulb not included. Accepts any of the following bulbs: 75W, PAR30, PAR30L, BR30 14W (max) LED. For ENERGY STAR compliance GU24 Kit. GU24 Kit not included.

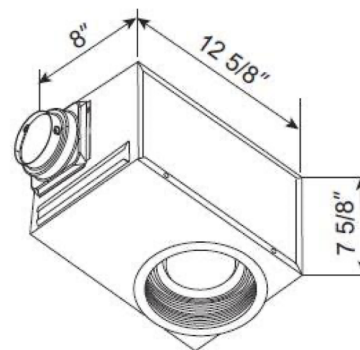
Finishes: White (W).

Installation: Must be installed by a licensed electrician. Complete installation instructions included.

User-Adjustable Integrated Sensor: Humidity sensor adjustable from 50-100% relative humidity (RH); responds to a.) rapid to moderate rise in humidity or b.) humidity above preset RH set point.

Warranty: 6 Years.

Architect's Specifications: Ventilation fan will be ceiling mount and no more than 1.2 sones at 80 CFM as certified by HVI at 0.1 Ps (inches water gauge). Power consumption shall be no greater than 20 watts with an efficiency rating of no less than 4 CFM/watt. The motor will be permanently lubricated, engineered for continuous operation. Light/fan to operate separately or in combination. Light/fan must use a 75W Max. PAR30, 14W Max. BR30 LED, or 75W Max. PAR30L (for use over tub/shower.) Duct diameter will be 4" to 5" expandable. Fan shall be ETL/cETL listed for tub/shower enclosure when used with GFCI branch circuit wiring and shall be ETL/cETL listed for use in insulated ceiling (Type I.C.). Fan can be used to Comply with CA Title 24.



- ETL Listed for installation over tub/shower enclosure with GFCI circuit wiring and used with a PAR30L 75W (max) CFL.
- ENERGY STAR compliant when used with a GU24 Kit. (GU24 Kit not included.)

Model: AP80H-RVL	4" Duct	
Static Pressure (inches w.g.)	0.1	0.25
Air Volume (CFM)	80	68
Noise (sones)	1.2	n/a
Power Consumption (Watts)	20	18.5
Energy Efficiency (CFM/Watts)	4	3.7
Current (AMPS)	0.2	0.19
ENERGY STAR rated	No	
Bulb NOT included		



Model	Qty	Comments	Project
			Location
			Architect
			Engineer
			Contractor
			Submitted by
			Date

SPEC SHEET

Bistro Single Light Sconce

Item # S 2024HAB/BLK-WG

S1

Designer: Ian K. Fowler

Height: 11.75"

Width: 6"

Extension: 7.5"

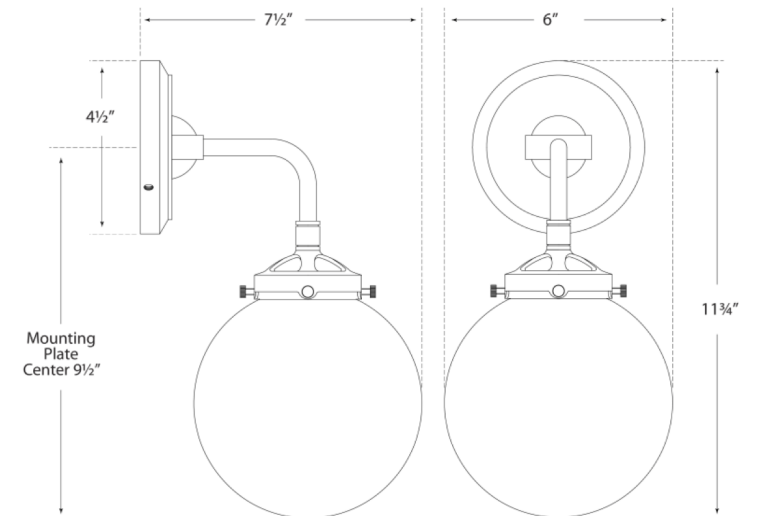
Backplate: 4.5" Round

Finishes: HAB/BLK, PN, PN/BLK

Glass Options: CG, WG

Socket: E12 Candelabra

Wattage: 40 G



Item # SL 2705HAB

Designer: Chapman & Myers

Height: 3.5"

Width: 18"

Extension: 8.25"

Backplate: 2.75" x 4.5" Rectangle

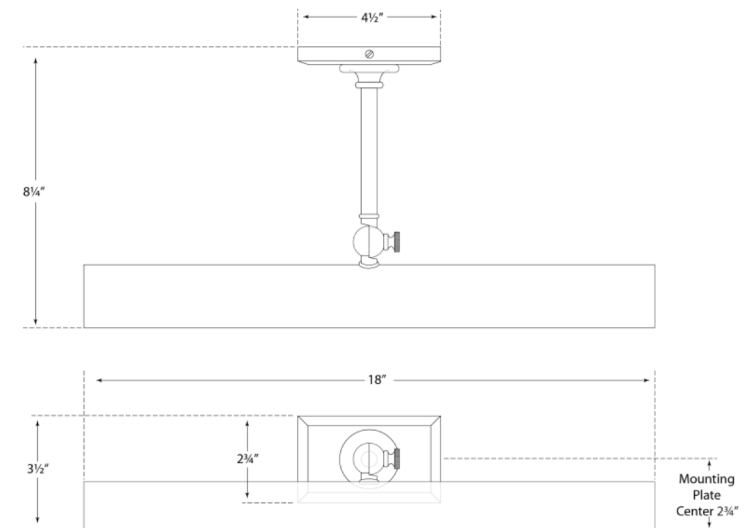
Finishes: AN, BZ, HAB, PN

Socket: 2 - E26 Keyless w/ Line Switch

Wattage: 2 - 25 T

Note: Requires Smaller Outlet Box

©EFC DESIGNS



Item # SL 2707HAB

Designer: Chapman & Myers

Height: 3.5"

Width: 30"

Extension: 8.25"

Backplate: 2.75" x 4.5" Rectangle

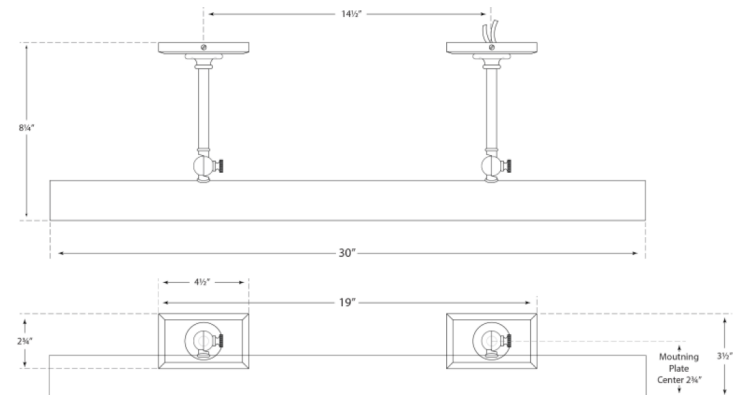
Finishes: AN, BZ, HAB, PN

Socket: 4 - E26 Keyless

Wattage: 4 - 25 T

Note: Requires Smaller Outlet Box

©EFC DESIGNS



SPEC SHEET

Anette Library Light

Item # RL 2270NB

S4

Designer: Ralph Lauren

Height: 12"

Width: 6.75"

Extension: 15 - 27.25"

Backplate: 4.75" Round

Finishes: NB, PN

Socket: E12 Candelabra

Wattage: 40 B

